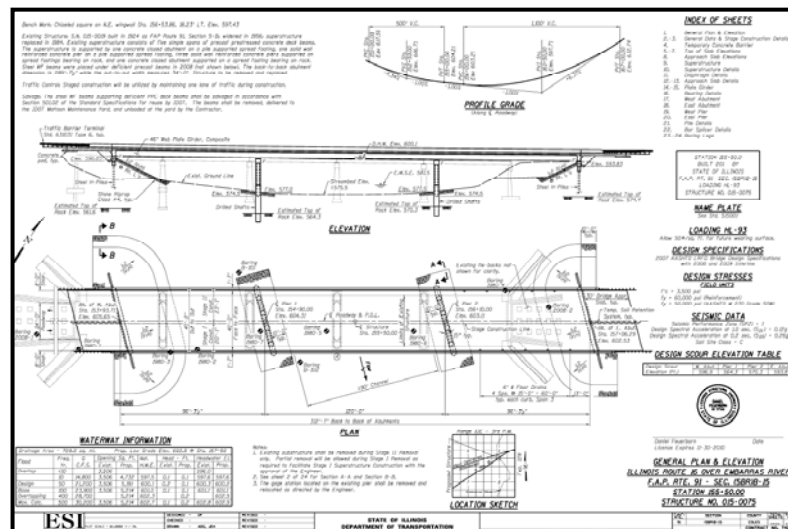


**IL 16 OVER EMBARRAS RIVER, COLES COUNTY, ILLINOIS**  
ILLINOIS DEPARTMENT OF TRANSPORTATION, DISTRICT 7



EXISTING STRUCTURE



PROPOSED BRIDGE PLAN

Design services for the replacement of the structure carrying IL 16 over the Embarras River in Coles County. The proposed structure was a continuous 312'-7", three-span, composite, 46" Web Plate Girder bridge skewed 15°. Services included final Structure Plans, Roadway Plans and Specifications. Roadway work consisted of a new vertical alignment, raising the road approximately 7', to meet IDOT hydraulic vertical clearance policy and improve roadway geometrics.

**Services Provided:**

- Final Structure and Roadway Plans
- Specifications / Special Provisions

This project reflects Firm and Staff experience.



Excellence, Service, Integrity  
www.esiltd.com